

P.O. Box 642522, Los Angeles, CA 90064

www.northwestdale.com

NWNA — GENERAL MEETING

Wednesday, January 22, 2014 — 7:00 PM

Saint Andrew's Lutheran Church—Fellowship Hall

11555 National Blvd. Los Angeles, 90064 (Federal and National)

GUEST : OUR NEW SENIOR LEAD OFFICER ADRIAN ACOSTA

**SPECIAL MEETING - FEBRUARY 19, 2014 - 7:00 PM - NWNA WELCOMES
OUR CONGRESSWOMAN KAREN BASS**

Strengthening our North Westdale Neighborhood Association in 2014

by Martin Rubin, NWNA President



What is the North Westdale Neighborhood Association (NWNA) and how do we operate?

The NWNA now serves about 1200 residences bounded by the 405 freeway to the east, the Santa Monica Freeway to the north, National Boulevard to the south, and Centinela Avenue / Bundy Drive to the west. The NWNA serves and addresses issues of the community within its boundaries including * promote efforts to improve and maintain health, safety, security, and quality of life * work with the LAPD to reduce crime in the neighborhood. * inform, outreach and encourage participation in the NWNA to **all** within the defined boundaries. * advocate on behalf of the neighborhood to government and others regarding issues that are deemed important by the NWNA. * be an open and democratic forum for issues of concern to the neighborhood. NWNA membership is open to **all residents** within the geographic boundaries.

Our volunteer Block Captains are very important to disseminating information. They distribute newsletters to designated blocks, and help with collection of our annual dues. Dues are used to cover the cost of our meeting space rental and the cost of printing our newsletter.

Thank you to all who have already sent in their dues.

As the new President of the NWNA, I wanted to make a few changes. I wanted to hold our meetings in the much larger and better equipped Fellowship Hall. There are times when we will have fairly large crowds and we need to be able to accommodate such meetings comfortably. For only a few extra dollars we now have access to a much more spacious area, an audio system, and the use of the kitchen to assist with serving refreshments. It's really an excellent space for us to meet. Do try to attend our meetings and see for yourself.

I also wanted to investigate how to improve our newsletter by taking paid local advertisements to offset the cost. Other neighborhood newsletters are folded rather than stapled. Our former newsletters were stapled and could be difficult to count and deliver. Color printing is much more expensive than black and white, but I was given an excellent price for a color glossy folded four page newsletter. If necessary we could revert back to B&W. I appreciate that a few of our members have asked if our new color newsletter is too expensive? Can we do away with the newsletter altogether and use only an electronic version online? Are the newsletters printed on recycled paper using environmentally friendly ink?

So far, we have been able to cover the cost of the newsletters with the paid advertisements. Our newsletters are printed on recycled paper with soy based ink and a water based gloss coating. The color and good quality are an attraction to those who are paying for ads. Those same ad buyers also appreciate that the newsletters are delivered to each door by a reliable Block Captain.

My thanks to our Block Captains who have been doing a commendable job. However we need to strengthen our Block Captain work force. There are several areas that need Block Captains. Some Block Captains are doing several blocks. I am requesting that you please consider taking a bit of time each month to volunteer as an NWNA Block Captain. You will get a designated number of newsletters dropped off to your door step and you will deliver them to your assigned block. (See list of blocks needing Block Captains on page #2 next to the map of our NWNA borders). Advantages of home delivered over electronic newsletters are numerous. I'll explain more in next month's newsletter. Feel free to email me at martinrubin@earthlink.net, or call me at 310-479-2529.

Thank you,

Martin Rubin

NWNA OFFICERS

Martin Rubin, President

(310) 479-2529

martinrubin@earthlink.net

Virginia Ernst, Vice President

Joan Winters, Secretary

Wayne Matsuyama, Treasurer

Get involved and help to energize our neighborhood!

Block Captains and Alternates are needed!

It's easy and takes very little of your time.

Have a story idea or news, or an event that might be of interest to the neighborhood? Contact NWNA Newsletter Editor, Martin Rubin.

Deadline for the February Newsletter is January 23

NWNA

Santa Monica Airport Committee Meeting

Tuesday, January 14

6:00 PM

12130 Sardis Avenue

For more information

call (310) 479-2529



CALENDAR

Jan. 14 - Airport Committee

Jan. 22 - NWNA Meeting

Feb. 19 - Special NWNA Meeting (Karen Bass)

We're on the web!

www.northwestdale.com

Webmaster Andrew Park - aparke@ca.rr.com



NWNA Book Club - For more details

or to join the mailing list, email:

Lillia Singer at:

bellagardendesign@att.net

NWNA General Meeting
Schedule

through June, 2014

**Mark your calendars and
please do attend!**

St Andrew's Lutheran Church
11555 National Blvd.

Fellowship Hall

Wednesdays 7:00 PM

January 22, 2014

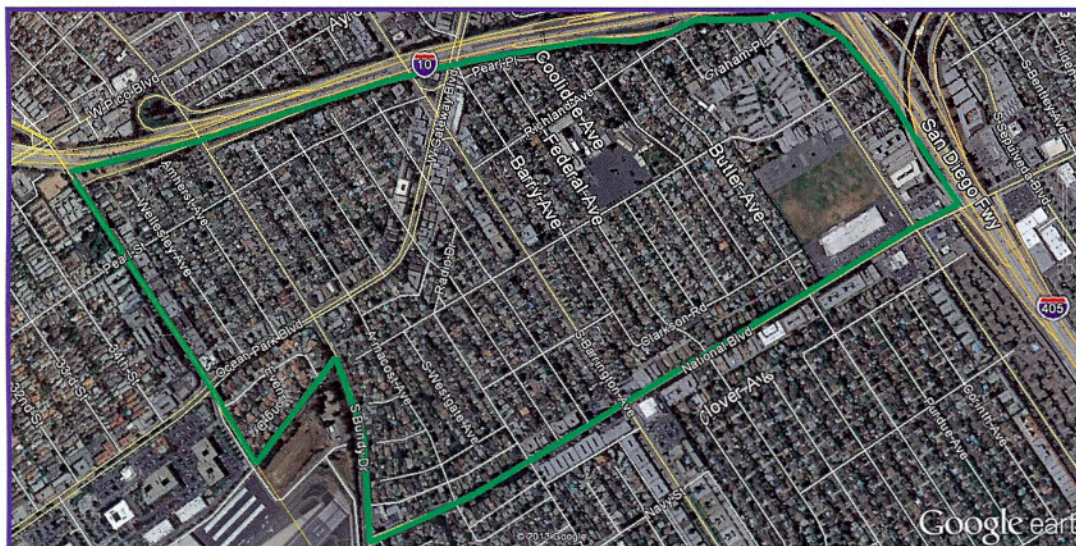
February 19, 2014

March 26, 2014

May 28, 2014

June 25, 2014

Join The NWNA E-Mail List - go to: <http://groups.yahoo.com/group/NWNA>
Click on the "Join This Group" button and follow the online instructions.



Block Captains Needed:

(you don't need to live on the block)

2500 Barry

2500 & 2600 Federal

2500 & 2600 Colby

2500 Butler

12000 National

2600 Armacost

2400 & 2500 Wellesley

2400 Bundy

2500 (west side) Bundy

2600, 2700, 2800 Granville

2400 & 2500 Stoner

Call: 310.479.2529

Annual Dues-Your donation will be used wisely.

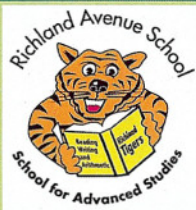
Homeowners and renters, please help our neighborhood association by making out a \$15 check payable to:

"NWNA", and mail to: NWNA, P.O. Box 642522, Los Angeles, CA 90064

You can also use the PAYPAL button on our website, www.northwestdale.com.

Or, if you know your Block Captain, give your donation to your block captain.

*To those who have already sent in contributions: **Thank you!***



Richland Avenue School
11562 Richland Ave. 90064
310/473-0467

www.richlandbooster.com
www.richlandavenueschool.org

School Tours for prospective families begin
January 30, 9:00 AM in the Library.
Coming Soon! French Immersion Program!
Additional Dates: February 27, March 27

****BREAKING NEWS****

New UCLA study shows North Westdale has very high air pollution due to Santa Monica Airport.

You may have heard on the TV news or read about it in a news article; our neighborhood has the distinction of having some of the most polluted air in Los Angeles.

From the Los Angeles Times:

The study by UCLA researchers compared four Los Angeles neighborhoods and found striking disparities in levels of air pollutants known as ultrafine particles, even over short distances. A zone of the Westside neighborhood of Mar Vista that sits downwind of Santa Monica Airport, for instance, has much higher levels of those pollutants in the air than the Eastside's freeway-choked Boyle Heights, according to the study.

UCLA researchers drove an electric Toyota RAV4 equipped with air pollution monitors through residential streets in Boyle Heights, downtown, West Los Angeles and a part of Mar Vista known as North Westdale.

The study found that while concentrations of ultrafine particles in Boyle Heights are about three times higher than in West Los Angeles, they are even worse in the North Westdale neighborhood, where researchers detected concentrations between 10 and 20 times higher.

Our Congresswoman Karen Bass has called for the closure of Santa Monica Airport in her letter to the Federal Aviation Administration.

Karen Bass will be the guest speaker at our Special February 19 NWA meeting at Saint Andrew's.

Mark your calendar and please attend to welcome her and to thank her.

The North Westdale Neighborhood Association
Is in Zone 2 of the
Mar Vista Community Council.



For More Information, Visit:
www.MarVista.org



Sundays 9 am - 2 pm
Grand View @ Venice Blvd
www.MarVistaFarmersMarket.org



Farmers Market Report

by Wayne Matsuyama

If you're looking for mushrooms at the Mar Vista Farmers Market, check out the selection at Kane's Family Farm. A recent addition to the market, Marisa, the seller and grower, grew up on a large mushroom farm in Canada. She has been growing mushrooms for several years in Southern California, cultivating them on American organic logs which she feels produce a better quality product. Available for sale are shiitake mushrooms grown in sawdust as well as blue, brown and her unique yellow oyster mushrooms.

Domenico's Foods is also a newcomer to the market with fresh pastas: spaghetti, rigatoni, linguine and bucatini to name some from their selection.

Domenico's will be at the market every other week. Here's a suggestion for dinner using ingredients from the market: rigatoni with mushrooms sautéed in extra virgin olive oil sprinkled with a little lemon juice, fresh parsley and finishing salts. Buy a baguette from Les Delices du four Bread or Café Laurent and you've got a great meal.



We Have A New Pacific Area Senior Lead Officer !
Adrian D. Acosta - #37285—Police Officer III+1
Pacific Area Senior Lead Officer - Los Angeles Police Department
37285@lapd.lacity.org — **310.622.3973**



CAREGIVERS USA, INC.
Trust, Love, & Care

(310) 450-0660

Providing The Best In-Home Care

24 hours a day, 7 days a week

BONDED | INSURED | WORKERS' COMP. | CPR CERTIFIED

Visit us at www.caregivingforyou.com

310-397-9493

310-837-9813

Dave Blair Plumbing

Service * Repair * Remodel

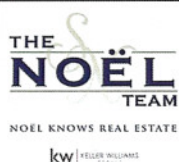
Rooter Service * Water Heaters * Tankless Heaters

Wall & Floor Furnace Repair * Repipe Specialist

35 Years Experience 24 Hour Emergency Service

Licensed * Bonded * Insured All Work Guaranteed

State Contractor's License: 693242



The prices are back up! If you've been thinking about selling NOW is the time.
CALL ME TODAY!

THE LAST DECADE AVERAGE SALES PRICE FOR SINGLE FAMILY HOMES IN NORTH WESTDALE

	# of Homes Sold	Avg. Sales Price	Avg. Price Per Sq. Ft.
2004	59	\$662,702	\$489
2005	40	\$753,538	\$605
2006	32	\$802,441	\$571
2007	38	\$776,124	\$585
2008	21	\$754,119	\$558
2009	41	\$657,449	\$496
2010	23	\$705,739	\$505
2011	31	\$644,955	\$454
2012	28	\$624,311	\$525
2013	44	\$768,701	\$573

SHERRI NOEL
TEAM LEADER & LISTING SPECIALIST

310.994.8721
WWW.THENOELTEAM.NET



Keller Williams Realty, an independent member broker does not guarantee the accuracy of information provided. Buyer is advised to independently verify the accuracy of all information. This is not intended as a solicitation if you currently have a broker. BRE # 01329053

Richard B. Page

**Certified Public Accountant
Tax Controversy Specialist**



**2800 28th Street, Suite 208
Santa Monica, CA 90405**

tel: (310) 450-8875 fax: (310) 450-8876
email: richard@rwwcpa.com web: rwwcpa.com

Law Offices of

Michael Millman Insurance Claims

• Auto • Motorcycle • Bicycle • Slip & Fall • Wrongful Death • Dog Bites

Your chances for a successful claim improves markedly with an experienced attorney on your side. Justice in insurance law is seldom successful without a fight. Call for a consultation.

Michael Millman & Associates
Trial Lawyer
40 Years Experience
(310) 477-1201
michaelmillman@gmail.com

GO GRAPHICS & PRINTING COMPANY

For Instant Prices on Printing, Visit: www.GoGraphics.us

Gary Avrech

814 S. Westgate Avenue, Suite 117, Los Angeles, CA 90049
Mail: P.O. Box 491848, L.A., CA 90049 | Email: GoGraphics.us@verizon.net
Tel. 310.207.4500 | Fax: 310.207.4508 | Cell: 818.321.3984

Education

Abbot Kinney Kids
Phone: (310) 822-9801
582 Venice Blvd.
Venice, CA 90291
Abbotkinneykids@gmail.com
Abbotkinneykids.com



Jessica Allen-Koontz
Owner

We specialize in toddler age transition into a Pre-School setting.
Please call or email us to set up a tour or for more information.

PAID ADVERTISEMENTS

To inquire about ad placement call 310-479-2529 or email to: martinrubin@earthlink.net